

RAS(G13D)

Catalog Number: 26038

Gene Symbol: RAS(G13D)

Description: Anti-RAS(G13D) Mouse Monoclonal Antibody

Background: K-Ras G13D mutation, which occur at codons 13, prevent efficient GTP hydrolysis and thus render the proteins in an activated state. As a result, multiple Ras effector pathways which control fundamental biological processes such as proliferation, apoptosis, and cell motility become constitutively activated and/or deregulated. K-Ras (G13D) is involved in tumor initiation and progression.

Immunogen: Recombinant full-length protein of K-Ras (G13D).

Tested Applications: ELISA, WB, IHC

Recommended Dilutions:

ELISA:	1:1000-1:5000
WB:	1:100-1:1000
IHC	1:50-1:100

Concentration: 1 mg/ml

Host: Mouse

Clonality: Monoclonal

Isotype: IgG2b

Purity: Purified from ascites

Format: Liquid

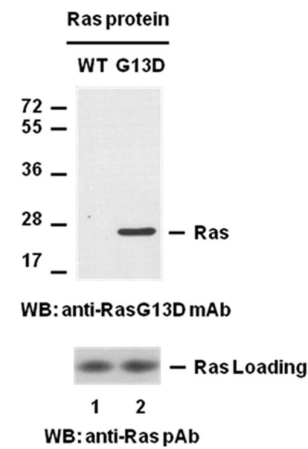
Preservative: No

Constituents: PBS (without Mg²⁺ and Ca²⁺), pH7.4, 150 mM NaCl, 50% glycerol

Species Reactivity: Anti-Ras(G13D) antibody recognizes Ras(G13D) proteins of vertebrates.

Storage Conditions: Store at -20°C. Avoid repeated freezing and thawing

Western blot:

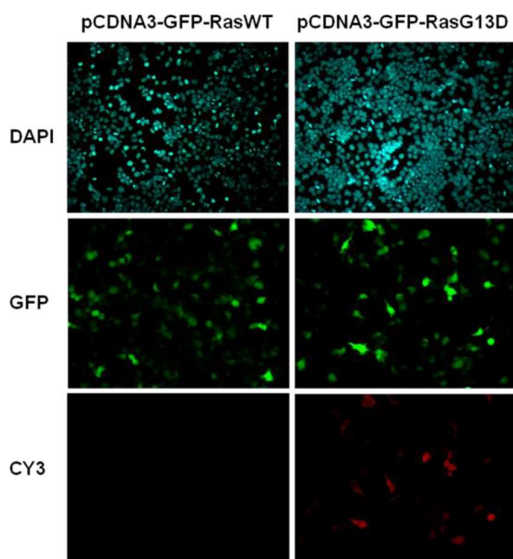


Western blot analysis of recombinant K-Ras WT and G13D proteins with anti-Ras(G13D) monoclonal antibody.

Equal amount of purified Ras WT (lane 1, Cat# 10172) and G13D (lane 2, Cat. # 10155) proteins were loaded and blotted with anti-Ras(G13D) mouse monoclonal antibody (Cat. # 26038) (top panel). Input control (bottom panel) was blotted with rabbit polyclonal anti-Ras antibody (Cat. # 21021).

FOR RESEARCH USE ONLY. NOT FOR DIAGNOSTIC APPLICATIONS

Immunofluorescence:



Immunofluorescence of cell expressing Ras(G13D) protein with anti-Ras(G13D) antibody.

HEK293T cells were transfected with pCDNA3-GFP-Ras (WT) plasmid (left column) or pCDNA3-GFP-Ras (G13D) plasmid (right column), then fixed and stained with anti-Ras(G13D) monoclonal antibody (Cat. # 26038).

FOR RESEARCH USE ONLY. NOT FOR DIAGNOSTIC APPLICATIONS